



RP/PPR Series Push Rivet

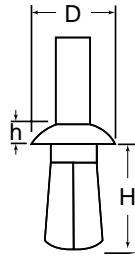


Fig. 1

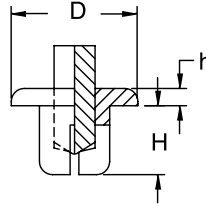
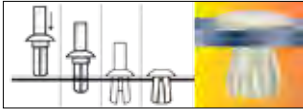


Fig. 2

PPR-T
Installation
Tool

| Installation Tool | Part No |
|-------------------|-----------|
| PPR-T1 | PPR-5 |
| | PPR-1 |
| | PPR-93-7 |
| | PPR-93-14 |
| PPR-T4 | PPR-2 |
| | PPR-9 |
| | PPR-4 |



Specifications:

- Material: Nylon 6; *Nylon 6/6, **Polyethylene
- Color: See Table

Features:

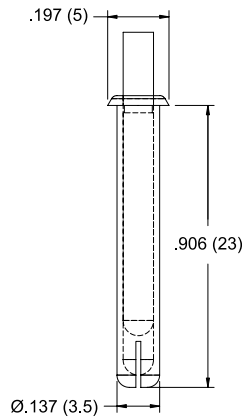
- Install by placing rivet into hole and pushing plunger into the rivet to expand legs to lock in place

| Item No. | | | Hole Dia. | Panel Thickness | Ø D | h | H | Fig. | Pack Qty. |
|-------------|--------|-----------|-----------|-----------------|-------|-------|-------|------|-----------|
| Black | White | Natural | In | In | In | In | In | | |
| RP100B | RP100W | — | 0.122 | 0.079 - 0.118 | 0.230 | 0.080 | 0.177 | 1 | 1000 |
| PPR-3055B | RP105W | — | 0.122 | 0.118 - 0.157 | 0.230 | 0.080 | 0.220 | 2 | 1000 |
| PPR-4050B | RP110W | — | 0.161 | 0.098 - 0.137 | 0.310 | 0.090 | 0.200 | 2 | 1000 |
| RP115B | RP115W | — | 0.161 | 0.137 - 0.177 | 0.310 | 0.090 | 0.236 | 1 | 1000 |
| PPR-4850B | — | — | 0.189 | 0.050 - 0.120 | 0.390 | 0.130 | 0.200 | 2 | 1000 |
| PPR-5B* | — | PPR-5* | 0.189 | 0.039 - 0.375 | 0.280 | 0.063 | 0.421 | 1 | 1000 |
| PPR-2B* | — | PPR-2* | 0.189 | 0.158 - 0.281 | 0.430 | 0.059 | 0.382 | 1 | 1000 |
| PPR-93-7B* | — | PPR-93-7* | 0.197 | 0.059 - 0.197 | 0.280 | 0.079 | 0.291 | 1 | 1000 |
| PPR-93-14B* | — | — | 0.197 | 0.118 - 0.276 | 0.382 | 0.079 | 0.433 | 1 | 1000 |
| RP130B | RP130W | — | 0.201 | 0.079 - 0.118 | 0.370 | 0.110 | 0.197 | 1 | 1000 |
| PPR-5060B | RP135W | — | 0.201 | 0.118 - 0.157 | 0.370 | 0.110 | 0.240 | 2 | 1000 |
| PPR-5070B | RP140W | — | 0.201 | 0.157 - 0.197 | 0.370 | 0.110 | 0.280 | 2 | 1000 |
| PPR-5080B | RP145W | — | 0.201 | 0.197 - 0.236 | 0.370 | 0.110 | 0.320 | 2 | 1000 |
| RP150B | RP150W | — | 0.201 | 0.236 - 0.275 | 0.370 | 0.110 | 0.354 | 1 | 1000 |
| RP155B | RP155W | — | 0.201 | 0.275 - 0.315 | 0.370 | 0.110 | 0.394 | 1 | 1000 |
| PPR-1B* | — | PPR-1* | 0.217 | 0.094 - 0.158 | 0.370 | 0.079 | 0.449 | 1 | 1000 |
| PPR-6060B** | — | — | 0.240 | 0.100 - 0.160 | 0.430 | 0.060 | 0.240 | 2 | 1000 |
| — | — | PPR-9* | 0.252 | 0.059 - 0.252 | 0.440 | 0.185 | 0.366 | 1 | 1000 |
| — | — | PPR-4* | 0.252 | 0.280 - 0.500 | 0.470 | 0.079 | 0.622 | 1 | 1000 |

* Nylon 6/6

** Polyethylene

FR-1 Fan Mount Rivet



Specifications:

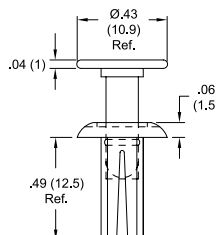
- Material: UL94 V-2 Nylon 6
- Color: Black

Features:

- Permanently mounts fan to chassis, or finger guards to fan
- Provides tamper-resistant application
- Prongs expand to hold securely as pin is driven in
- Single-operation front mounting saves time and money

| Item No. | Hole Ø | | Mounting Thickness | | Installation tool | Pack Qty. |
|----------|-------------|-------------|--------------------|-------------|-------------------|-----------|
| | In | mm | In | mm | | |
| FR-1 | .137 - .138 | 3.49 - 3.51 | .807 - .846 | 20.5 - 21.5 | PPR-T1 | 1000 |

PPR-10 Push Rivet



Specifications:

- Material: UL94 V-2 Nylon 6
- Color: Natural

Features:

- Used in either a round or square hole
- Square hole mounting is for anti-rotation applications

| Item No. | Total Holding Thickness | | Mounting Hole Options (Round Hole) | | Mounting Hole Options (Square Hole) | | Pack Qty. |
|----------|-------------------------|-------------|------------------------------------|-----|-------------------------------------|-----|-----------|
| | In | mm | In | mm | In | mm | |
| PPR-10 | .140 - .200 | 3.56 - 5.08 | .25 | 6.4 | .22 | 5.6 | 100 |